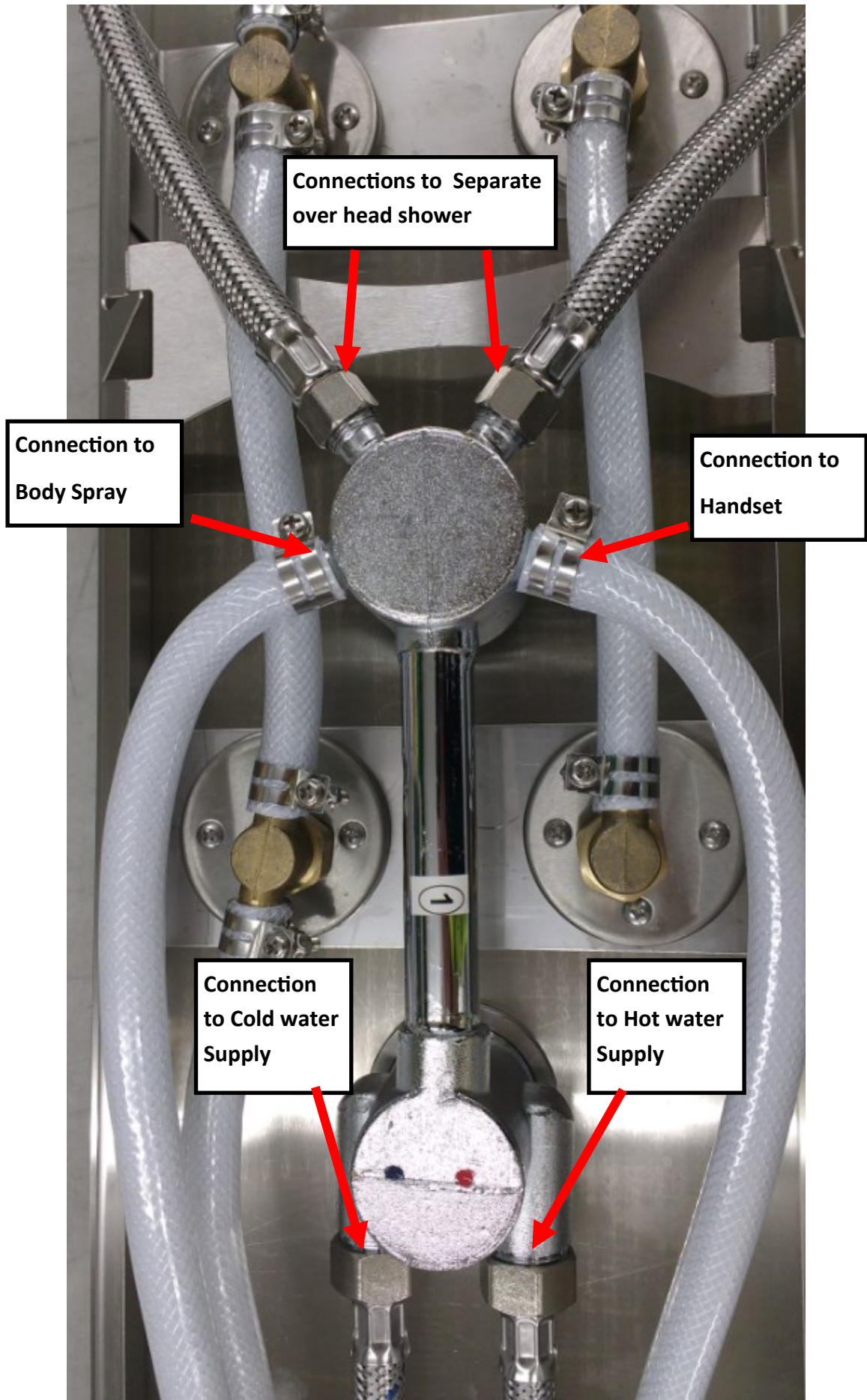


Hudson Reed

Two Part Shower Panel Installation Guide



Pipe Diagram



Important Information

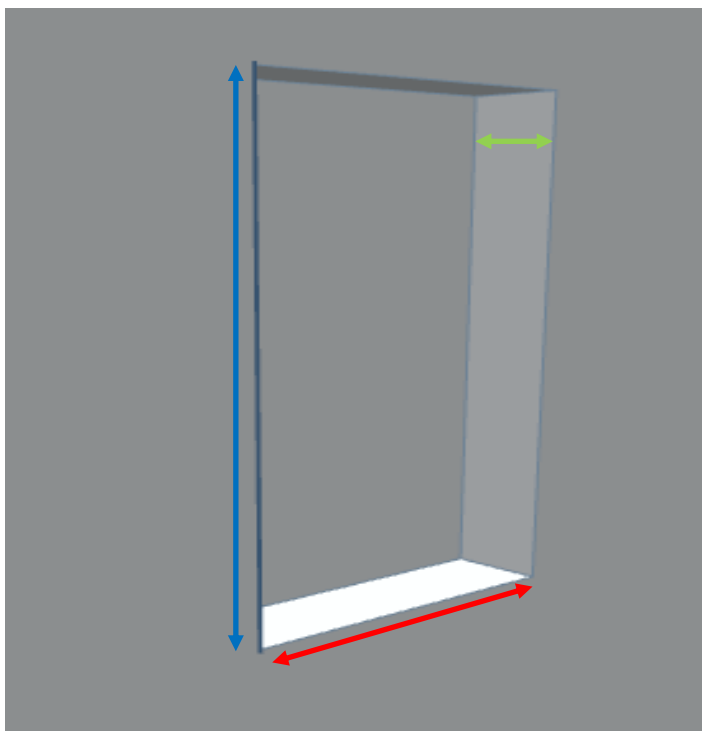
- We Recommend installation only be performed by a qualified plumber.
- We recommend installation be performed by two people.
- Minimum Operating pressure for the panel is 2 bar (29psi)
- Before starting installation, please ensure all parts are present.
- This product is only designed for use indoors .
- Some showering products can cause damage to the finish if spilt on the panel.
- Clean any spillages up with a clean dry cloth.
- Please note, it is the duty of the end user / installer to decide the installation height of the product.

Channeling Out the wall

WIDTH - Measure the rear width of the panel and add an additional 5mm.

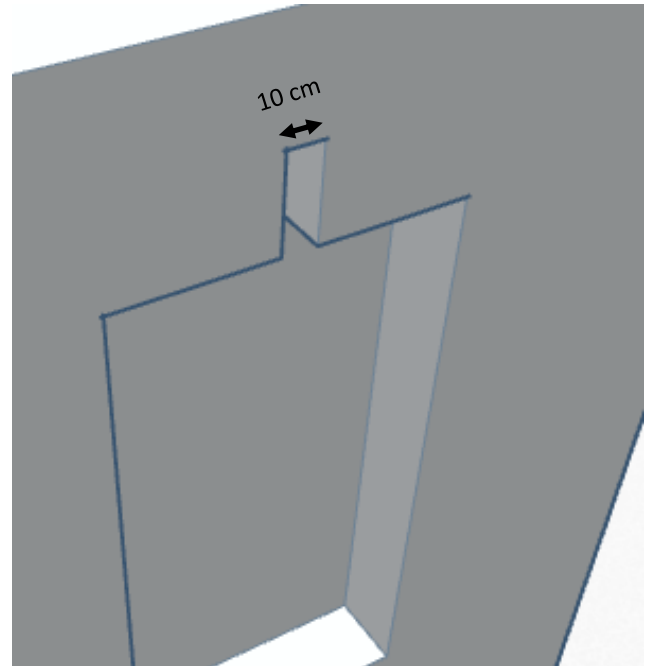
LENGTH - Measure the rear length of the panel and add an additional 5mm

DEPTH– Wall Depth needs to be 82mm to accommodate the panel and fixings.

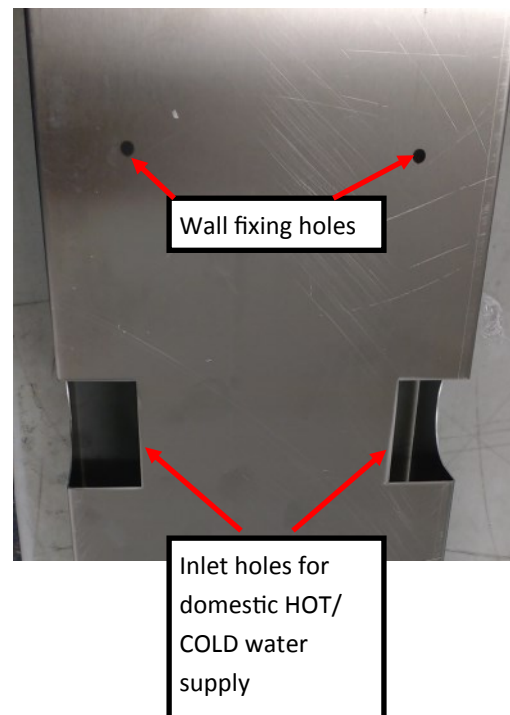


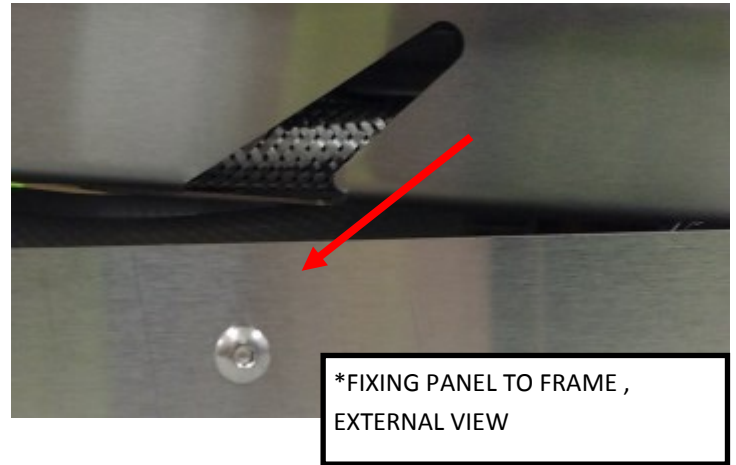
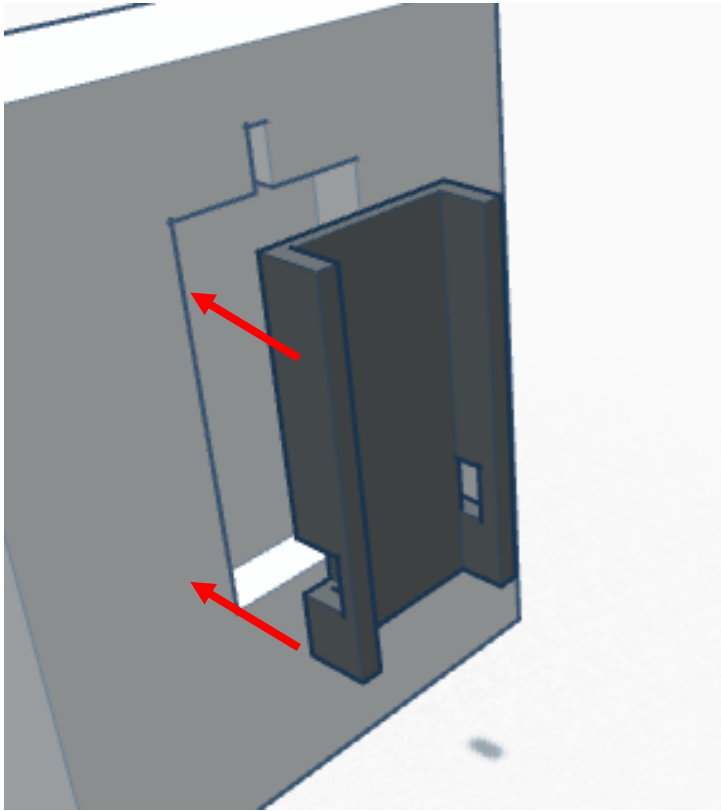
Channeling out for shower head

- Channel a 10mm width hole for the flexible hoses going to the main shower head.



- Below is an image of the rear frame of the panel , this can also be used as a guide for where to position your water supply pipes .

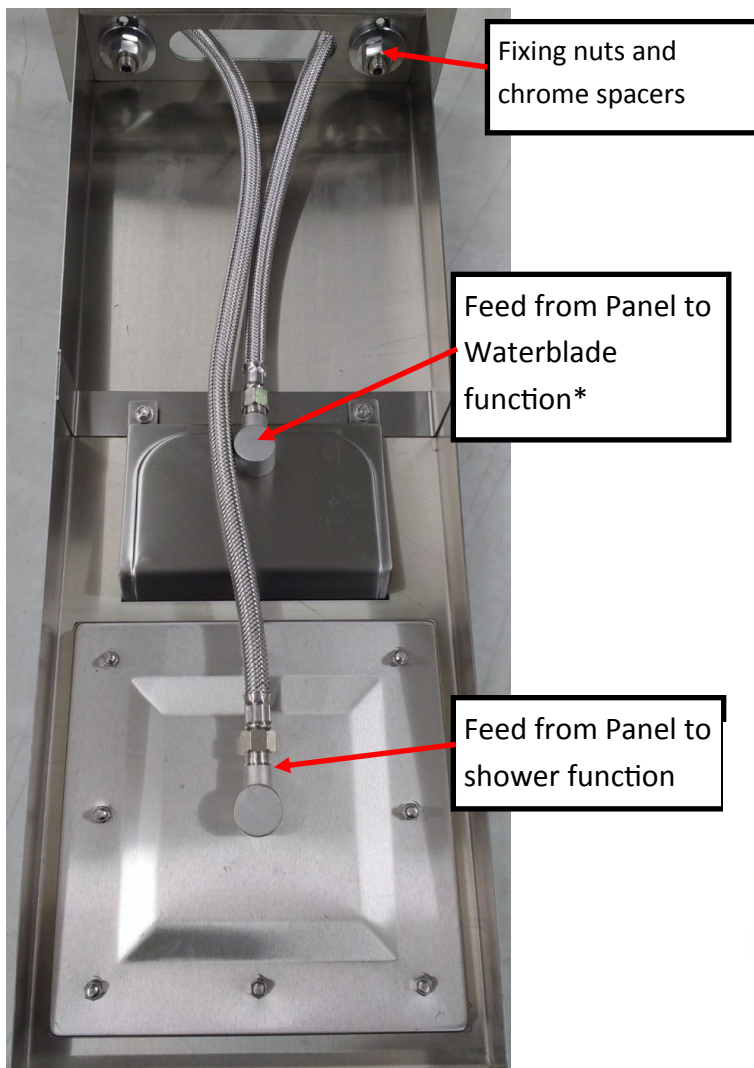
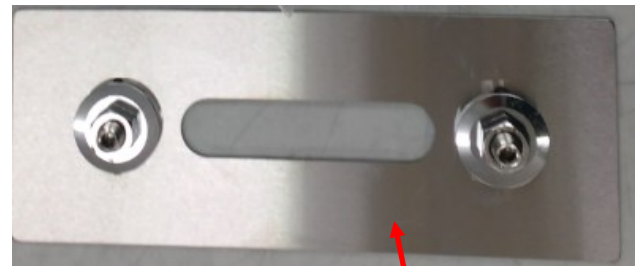
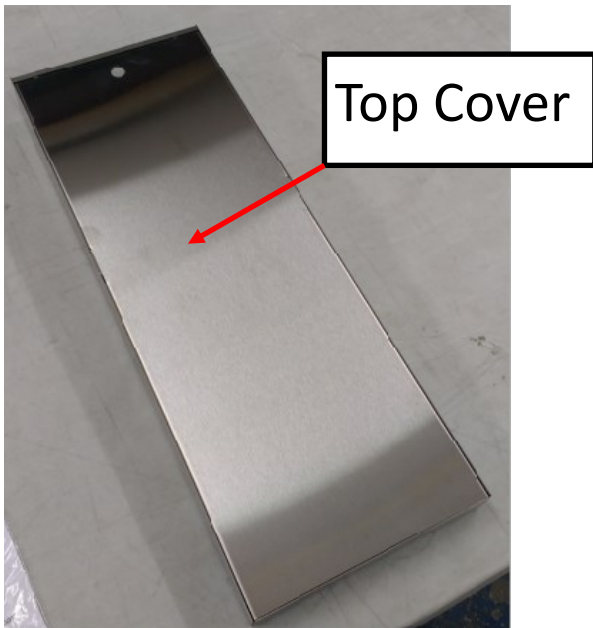




- To fix the frame, push it into the wall Void and fix via the four fixing holes on the back panel . Ensuring that the Water feed holes on the side are towards the bottom of the panel and correctly push over the water feed pipes .
- Offer the main panel up to the wall and connect the hot and cold feed pipes to the incoming hot and cold supply.
- Push the feed pipes up through the channel and through the wall fixing plate.
- To fix the panel to the rear frame line the fixing points on the panel (Right image ,Below) with the bolts on the wall frame (Left image, Below) the panel will then drop into them and be held securely.

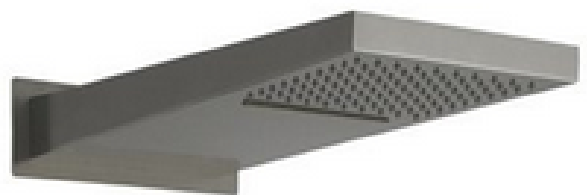


Separate Shower Head



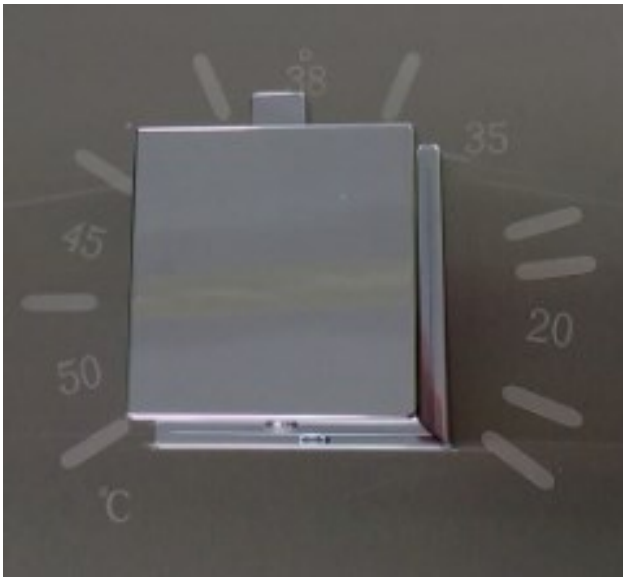
- The wall fixing plate should be attached to the wall when the main panel has been installed
- Before fixing the head to the wall ensure that you feed the water pipes through the wall fixing plate.
- The shower head slots onto the two protruding bolts on the fixing plate and is secured with the fixing nuts and chrome spacers.
- Once the shower is ready to be used for the first time, check the feeds from the panel are secure before replacing the top cover.

*Certain models may have only one overhead function only.



Product Operation

Thermostatic control



To Adjust Temperature, turn the handle as follows -

- Rotate Anti –Clockwise to increase Temperature
- Rotate clockwise to decrease Temperature

Please note, the next time the unit is used it will resume operation at the temperature it was last set to.

If you are not happy with the temperature range produced by the shower, you can adjust this by following the section headed “Calibration”

***This unit is thermostatically operated, if for any reason the cold supply to the unit is interrupted, the unit will stop all water flow.**

The shower will resume as soon as the cold water supply is restored.

***Children and persons of diminished capability should be supervised while operating this product.**

Divertor operation



To begin water flow to the unit, rotate the handle towards the function you require as pictured on the panel until you hear a click. To move to a different function, again turn the handle until a click is heard.

To turn water flow OFF, return the handle to its starting position.

- Number of functions may differ by model.
- Certain models may incorporate a separate control for turning the water on and off, models with this function will have three controls. Models with two controls are operated as per the above.

*** Please note that it is not possible to adjust the rate of flow with the two handle version of this unit.**

Calibration / Fault finding

Due to changes in water temperature and other external factors, you may need to occasionally need to calibrate your shower panel to ensure optimum performance. E.G— your panel is too Hot or Too cold. To do this—

1. Remove the temperature handle from the panel, taking note of how the handle is currently sat .
2. Place the handle back onto the panel but only by about a quarter of the way.
3. Turn the handle all the way Anti –clockwise (*this will raise the temperature to the maximum the unit is capable of , holding it only partially over the spindle bypasses normal operation*).
4. Turn the unit on.
5. Holding the handle still only partially onto the spindle, begin to turn clockwise in small increments , stopping for several seconds with each movement.
6. Each time you stop, check the water temperature from the shower. Repeat this until you reach a satisfactory temperture .
7. Turn the unit off.
8. Line up and replace the handle.

***If you are unsure on how to calibrate your shower and require further assistance, please contact our helpline , we are happy to help.**

Address—

Unit 1+2 Dawson Court
Billington Road
Burnley
Lancashire
BB11 5UB

Tel- (0)877 778 8460

"Showering temperature is not hot enough"

- Ensure hot water supply is at least 60°C
 - Make sure you have equal pressures
- *Check for airlocks in pipework

• Ensure there are no inverted 'U's in any of the pipework runs

"Water goes cold during shower"

*Insufficient hot water storage

"When shower panel is set at cold, the showering temperature is too hot"

Shower panel temperature is too hot"

• Hot and cold supply connections have been made in reverse - reconnect Correctly

"Showering temperature is not hot enough"

• Turn down the flow of hot water from the pump using the in-line isolator valve